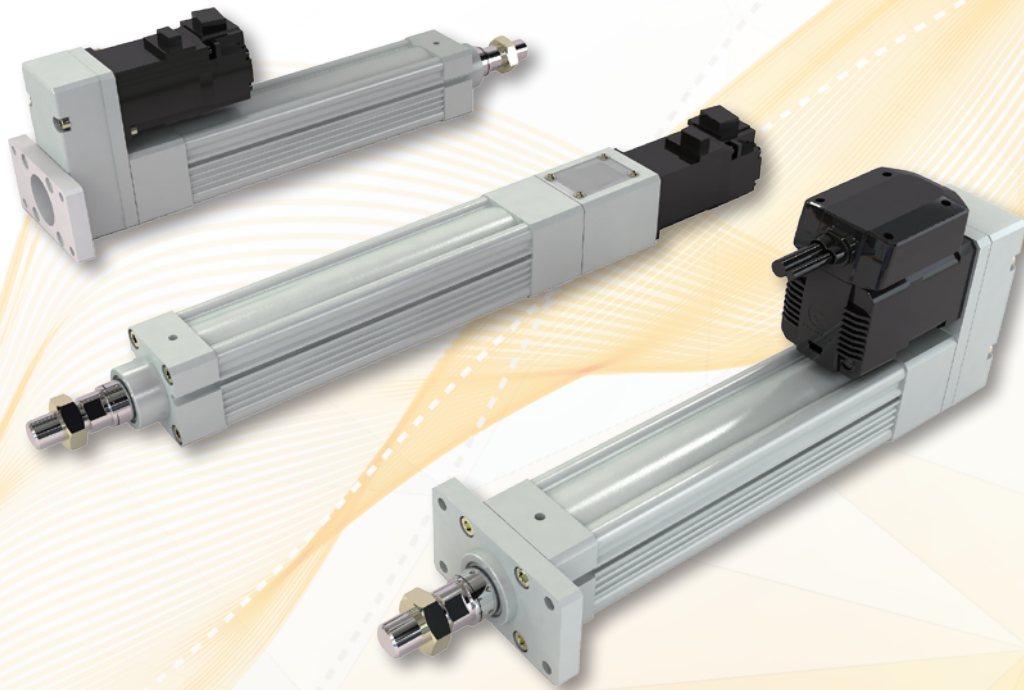


Electric Motor Cylinder

EMC Series



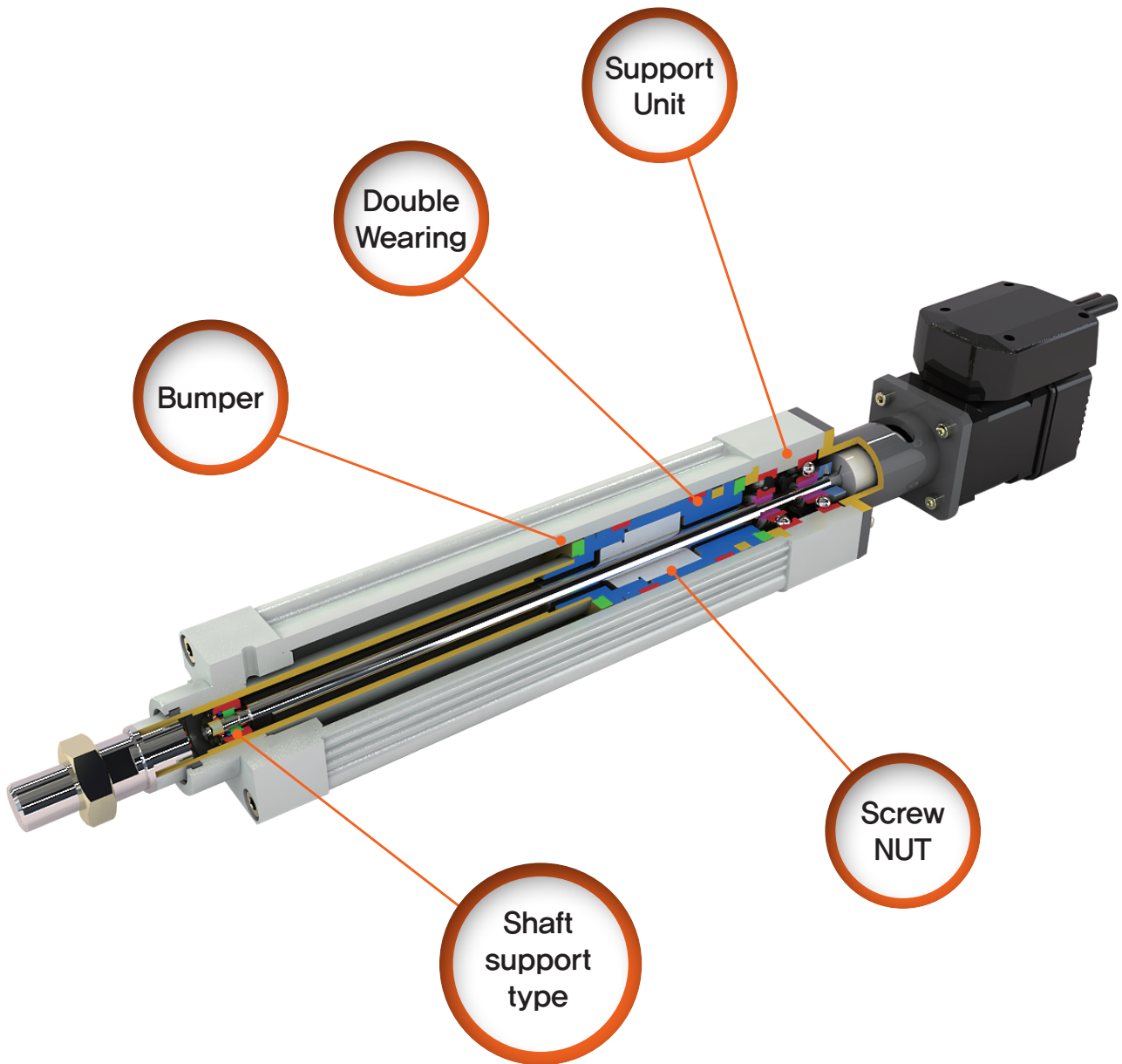
“

Total solution provider, TPC motion

For environmental-friendly
and efficient automation,

New EMC Series

”



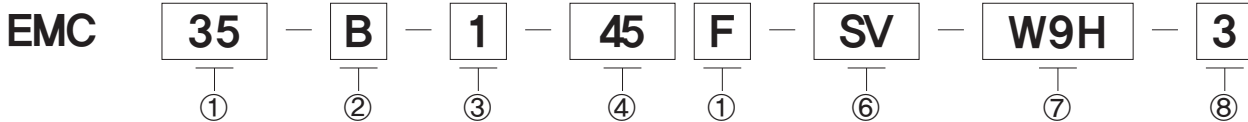
※ The design and structure can be changed without notice.



Features

- Increased endurance and side load capacity with Teflon double wearing.
- All models are equipped with non-rod rotating function in order to prevent changing origin point
- Prevent loosening ball screw nut assembly in double nut type.
- Prevent vibration in high speed with support unit and improved supporting axis.
- Bumper is basic for all models.
- Customizing motor is available. (Step motor, Servo motor, BLDC, etc.)

How to order



① Size

35	□ 35mm
45	□ 45mm
65	□ 65mm
80	□ 80mm
130	□ 130mm

② Mounting

B : In-line motor mounting type
 P : Parallel motor mounting type
 L : Foot
 F : Front flange
 T : Rear trunnion
 G : Rear flange(for parallel motor only)
 D : Double clevis (for parallel motor only)
 ex.) PF : Parallel motor with front flange

③ Screw Lead

Classification Size	1	2	3	4	5
35	B0802.5		(B0808)		
45	B1002	B1004	B1205	B1210	T1002
65	B1205	B1210	B1605	B1610	T1603
80	B2505	B2510			T2505
130	B4005	B4010	B4020	B4040	T4006

Note) Contact us for TM screw option.

④ trok [mm]

35 : 50 ~ 300
 45 : 50 ~ 400
 65 : 50 ~ 800
 80 : 50 ~ 1,000
 130 : 50 ~ 1,000

※ Please refer to the additional table for standard stroke.
 (please contact us for non-standard stroke)

⑤ Rod Type

Blank : rod end male thread
 F : rod end female thread

⑥ Motor

Blank : Standard step motor of TPC
 SV : Servo motor
 S : Others (customized)

Note1) Standard TPC step motor is built-in CLOSE LOOP driver type (except 80, 130 model)

Note2) Servo motor is based on customer's selection.

Contact us for other servo motors.

Note3) Other motors will be applied with customer selects

⑦ Auto Switch

Blank : None
 W8H : Reed switch(Horizontal type),
 W8V : Reed switch(Vertical type)
 W9H : Solid state switch(Horizontal type),
 W9V : Solid state switch(Vertical type)
 W9HN : Solid state switch(NPN),
 W10V : Solid state switch(Vertical type)

W9HP : Solid state switch(PNP)
 * Blank : Length of lead wire, 1m
 L : Length of lead wire, 3m

Note1) Contact us for applying N.C type as LIMIT S/W.

⑧ Number of Auto Switches

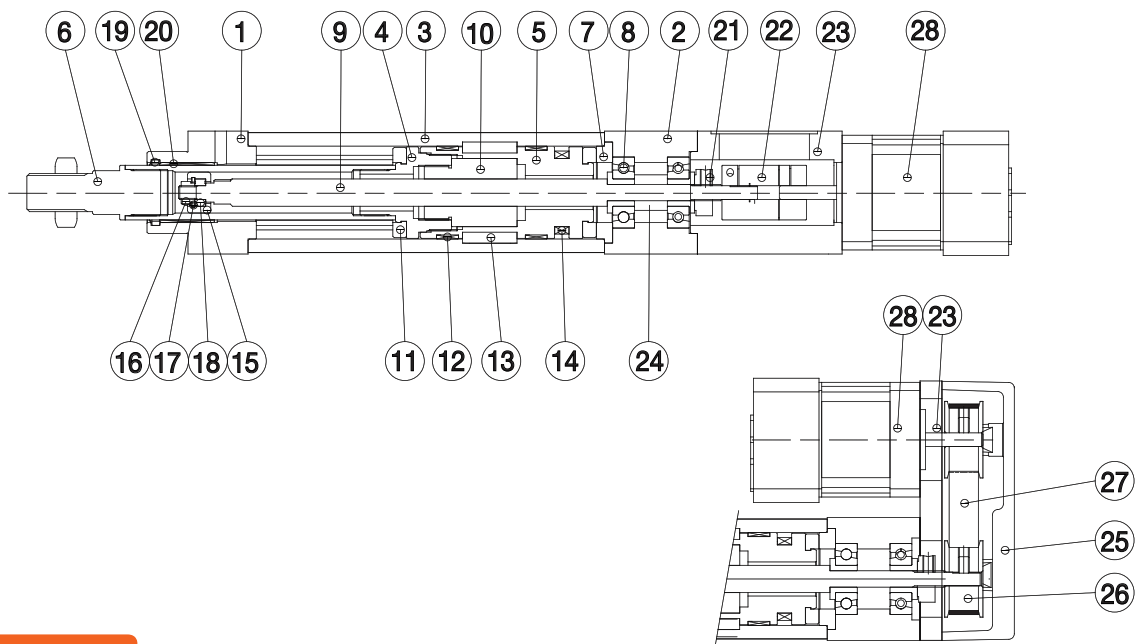
Blank : None
 1 : 1 pc
 N : N pcs

Electric Motor Cylinder

Specifications

Cylinder Model	35	45	65	80	130
Screw Lead	0802.5	1002, 1004, 1205, 1210, T102	1205, 1210, 1605, 1610, T1603	2505, 2510, T2505	4005, 4010, 4020, 4040, T4006
Stroke (mm)	30 ~ 300	30 ~ 400	30 ~ 800	30 ~ 1,000	30 ~ 1,000
Motor	28 Step	42 Step, 50, 100W Servo	60 Step, 200, 400W Servo	86 Step, 750W Servo	1KW, 1.5KW Servo
Motor Attachment Type	In-line type, parallel type				
Mounting	Direct mounting, Foot, Front flange, Rear flange, Trunnion, Double clevis				
BUMPER	Standard for all models				
Non-rod rotating	Standard for all models (to prevent a rod point from moving)				

Structure

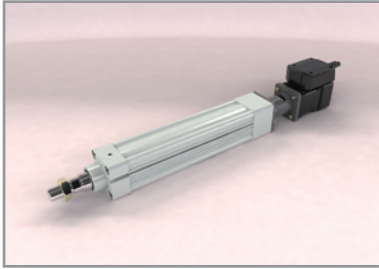


Components

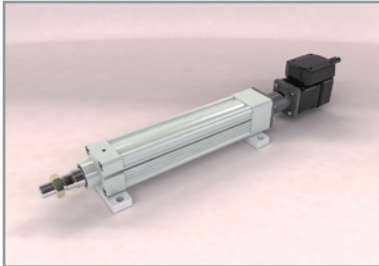
In-line Motor Type					NO	Component	Qty	Material	Surface Treatment
NO	Component	Qty	Material	Surface Treatment	15	Roller Guide	1	POM	-
1	Rod Cover	1	AL	Alumite	16	Bearing Nut	1	Carbon steel	Galvanized
2	Support Unit	1	AL	Alumite	17	Snap Ring	1	Free-cutting steel	Zinc chromated
3	Tube	1	AL	Alumite	18	Ball Bearing	1	-	-
4	Piston A	1	AL	-	19	Wiper	1	NBR	-
5	Piston B	1	AL	-	20	Dry Bush	1	PbBrC3	-
6	Piston Rod	1	Carbon steel	Nickel, Chrome	21	Lock Nut	1	Free-cutting steel	Zinc chromated
7	Concentric Ring	1	Free-cutting steel	Nickel plated	22	Coupling	1	AL+Ureyhane	-
8	Angular Bearing	2	-	-	23	Motor Bracket	1	AL	Alumite
9	Screw Shaft	1	-	-	24	COLLAR	1	Carbon steel	Galvanized
10	Screw Nut	1	-	-	Parallel Motor Type				
11	Bumper	2	Urethane	-	25	Belt Cover	1	AL	Powder Coating
12	Wearing	2	Teflon	-	26	Timing Pulley	2	AL	-
13	Key	2	POM	-	27	Timing Belt	1	NBR	-
14	Magnet	1	NBR	-	28	Motor	1	-	-

Combination

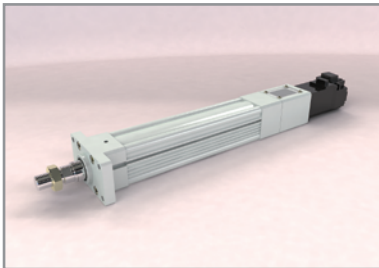
In-line motor mounting type



Standard type

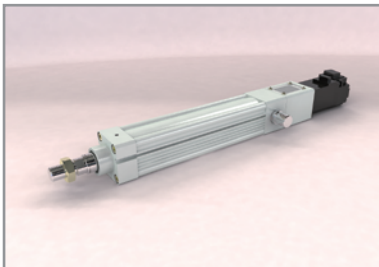


Foot type



Front flange type

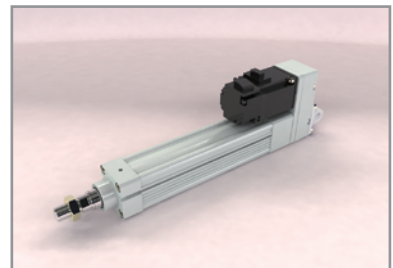
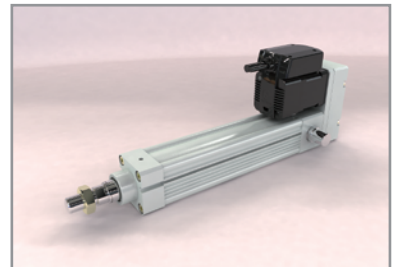
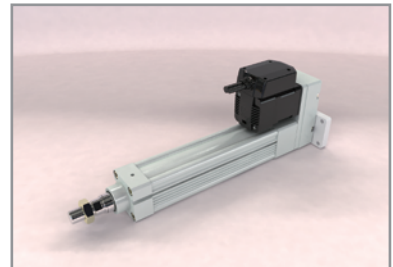
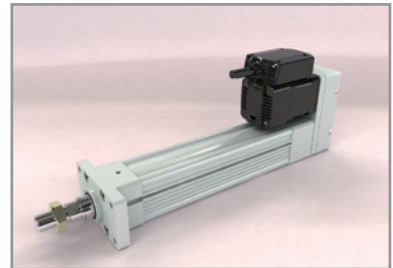
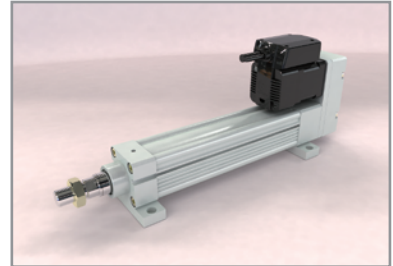
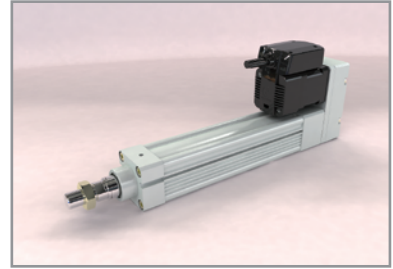
Rear flange type



Trunnion type

Double clevis type

Parallel motor mounting type



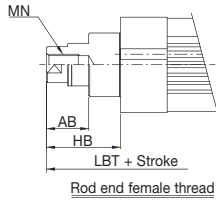
※ Above images can be changed based on motor options applied

Electric Motor Cylinder

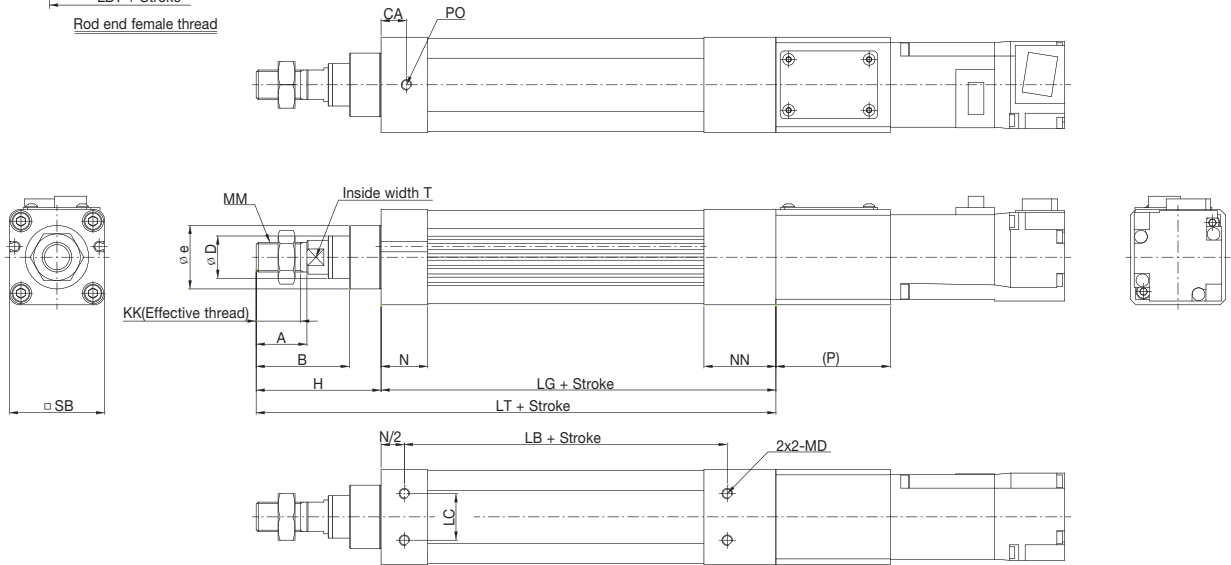
Dimension for In-line motor mounting type

Standard type

Rod end female thread

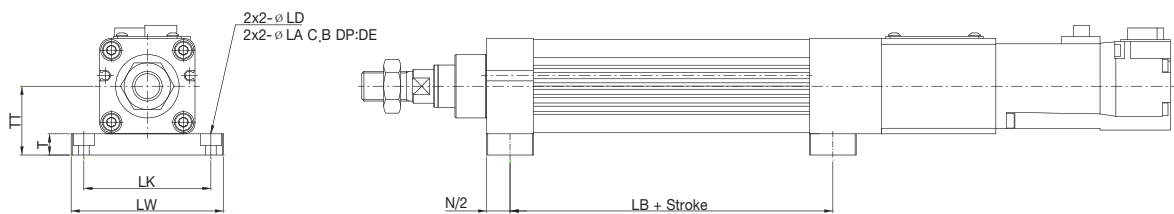


Size	AB	HB	MN	LBT
35	15	28	M6	144
45	20	35	M10	171,5
65	35	55	M12	214
80	45	70	M16	286
130	50	85	M24	397



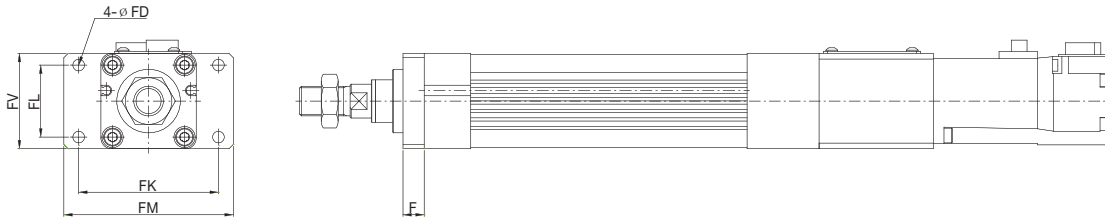
Size	SB	A	KK	B	D	e	MM	T	H	N	NN	LG	LT	LB	MD	(P)	CA	PO
35	35	18	16	33	16	25	M8 X 1,25	10	46	16	28	121	167	93	M4	44	10	M5
45	45	24	21	44	20	30	M14 X 1,5	14	59	22	34	136,5	195,5	102,5	M5	53	12	M5
65	65	35	32	70	32	45	M18 X 1,5	22	90	25	40	163	253	123	M8	58	12,5	M5
80	80	40	37	85	40	55	M22 X 1,5	27	110	30	50	216	326	166	M10	88	15	Rc(PT) 1/8
130	130	60	54	110	60	85	M36 X 1,5	45	145	40	72	312	457	240	M14	126	20	Rc(PT) 1/8

Foot type



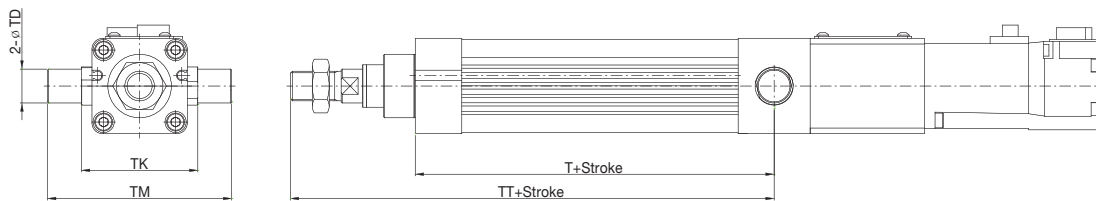
Size	LB	LK	LW	T	TT	LD	LA	DE
35	93	48	60	8	25,5	4,5	8	4,5
45	102,5	60	72	10	32,5	5,5	9	5,5
65	123	86	110	14	46,5	8,5	14	9
80	166	105	130	18	59	10,5	17	11
130	240	160	190	24	89	15	23	15

Front flange type



Size	FK	FM	FL	FV	FD	F
35	48	60	26	35	4,5	8
45	66	80	34	45	5,5	10
65	90	104	50	65	6,5	14
80	108	128	60	80	11	18
130	160	190	94	130	15	26

Trunnion type

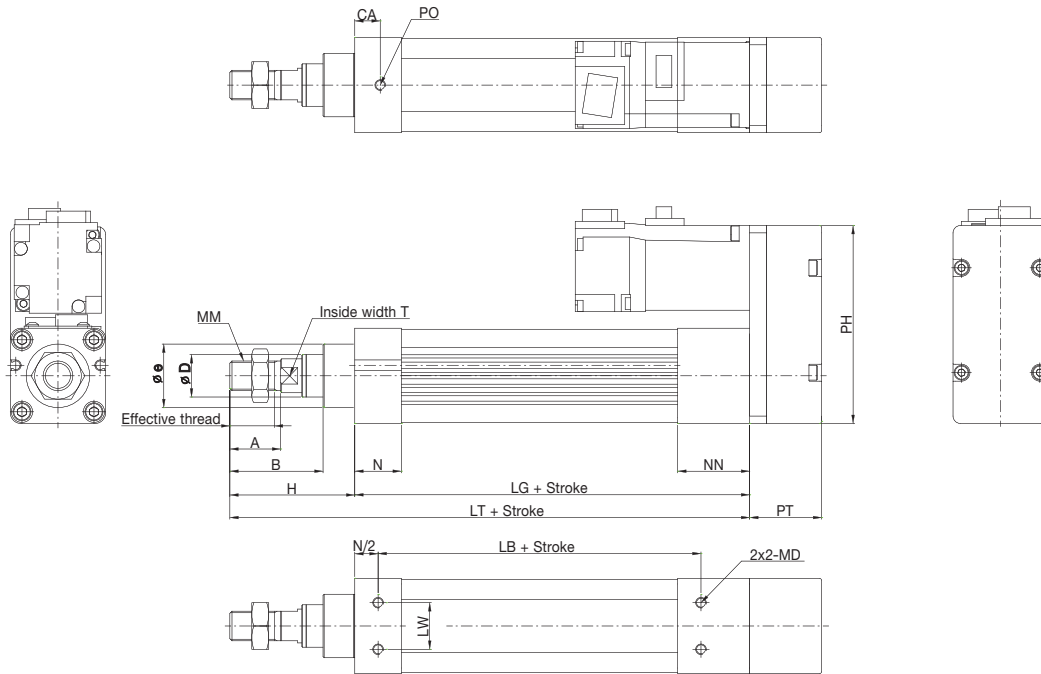


Size	TK	TM	TD	T	TT
35	41	61	10	107	153
45	55	87	16	119,5	178,5
65	76	116	20	143	233
80	92	144	26	191	301
130	146	236	46	276	421

Electric Motor Cylinder

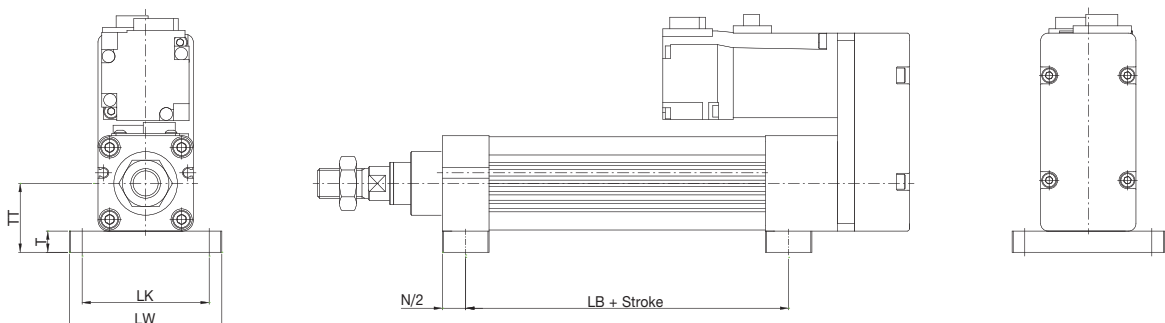
Dimension for Parallel motor mounting type

Standard type



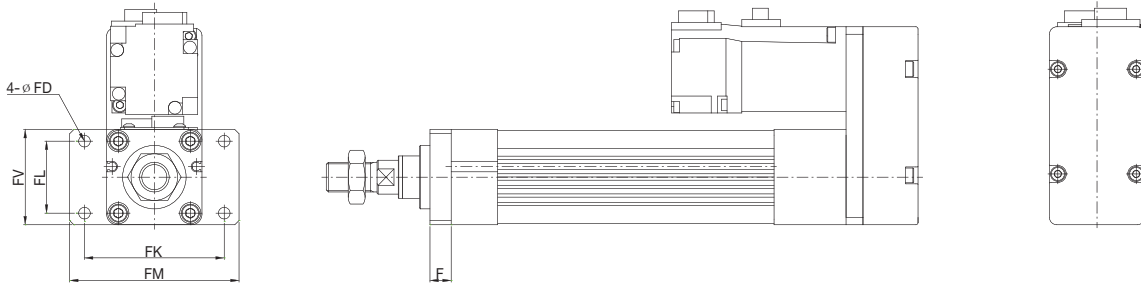
Size	A	KK	B	D	e	MM	T	H	N	NN	LG	LT	LB	LW	MD	PH	PT	CA	PO
35	18	16	33	16	25	M8 X 1,25	10	46	16	28	121	167	93	16	M4	71	29	10	M5
45	24	21	44	20	30	M14 X 1,5	14	59	22	34	136,5	195,5	102,5	22	M5	93,5	34	12	M5
65	35	32	70	32	45	M18 X 1,5	22	90	25	40	163	253	123	34	M8	136	45	12,5	M5
80	40	37	85	40	55	M22 X 1,5	27	110	30	50	216	326	166	36	M10	178	60	15	Rc(PT) 1/8
130	60	54	110	60	85	M36 X 1,5	45	145	40	72	312	457	240	68	M14	274	76	20	Rc(PT) 1/8

Foot type



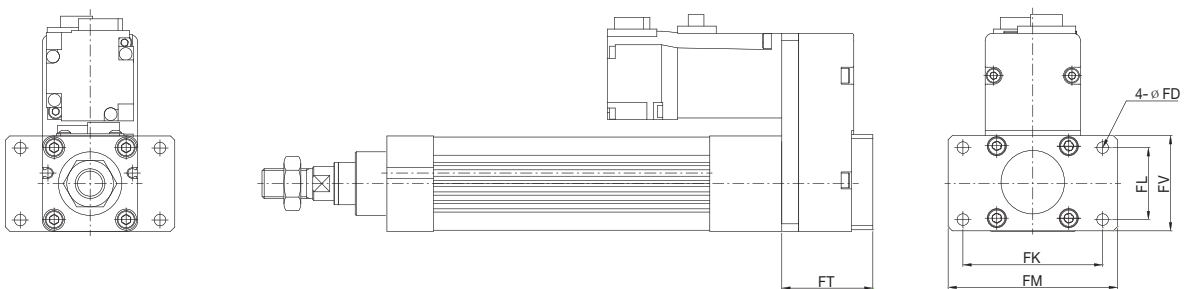
Size	LB	LK	LW	T	TT	LD	LA	DE	N
35	93	48	60	8	25,5	4,5	8	4,5	16
45	102,5	60	72	10	32,5	5,5	9	5,5	22
65	123	86	110	14	46,5	8,5	14	9	25
80	166	105	130	18	59	10,5	17	11	30
130	240	160	190	24	89	15	23	15	40

Front flange type



Size	FK	FM	FL	FV	FD	F
35	48	60	26	35	4,5	8
45	66	80	34	45	5,5	10
65	90	104	50	65	6,5	14
80	108	128	60	82	11	18
130	160	190	94	130	15	26

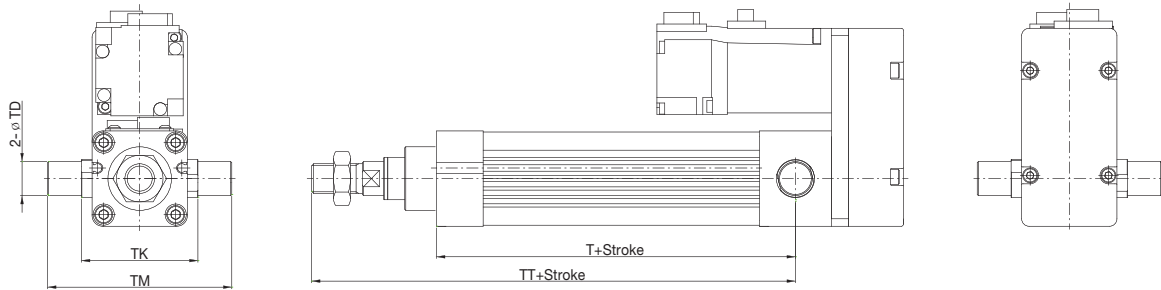
Rear flange type



Size	FK	FM	FL	FV	FD	FT
35	48	60	26	35	4,5	36
45	66	80	34	45	5,5	43
65	90	104	50	65	6,5	73
80	108	128	60	82	11	77
130	160	190	94	130	15	101

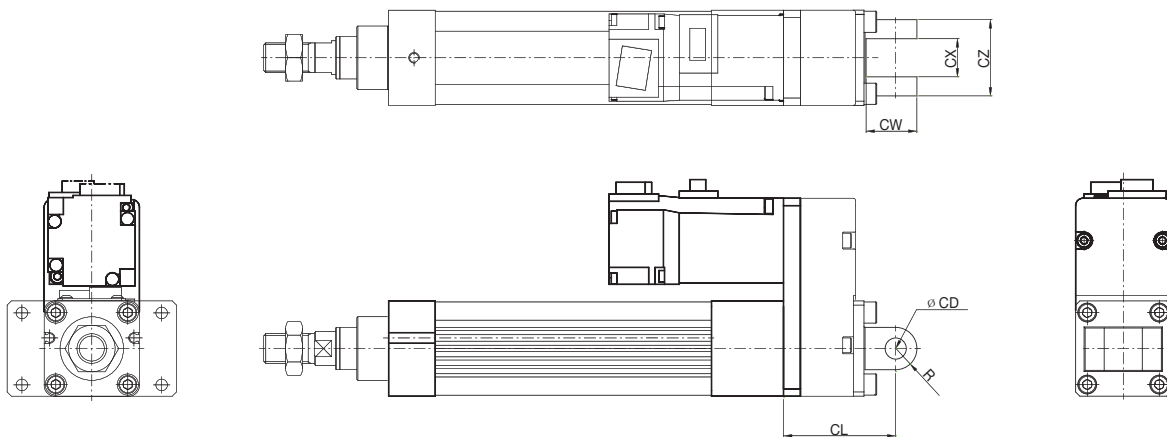
Electric Motor Cylinder

Trunnion type



Size	TK	TM	TD	T	TT
35	41	61	10	107	153
45	55	87	16	119,5	178,5
65	76	116	20	143	233
80	92	144	26	191	301
130	146	236	46	276	421

Double clevis type

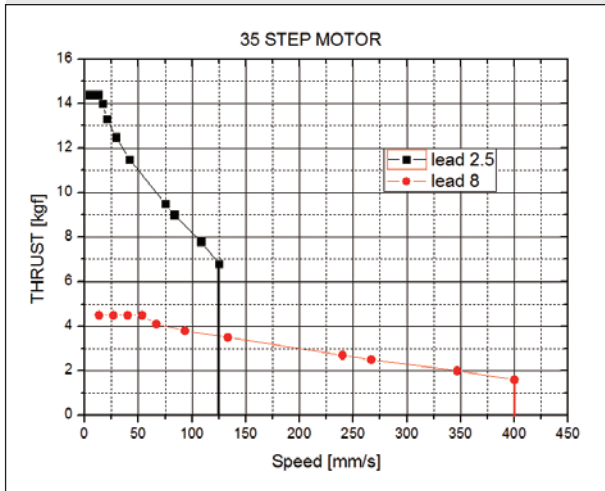


Size	CL	CX	CW	CZ	CD	R
35	46	8	21	16	8	9
45	53	18	24	36	10	10
65	72	22	34	44	14	14
80	89	22	34	44	14	14
130	145	40	90	84	35	35

Thrust data

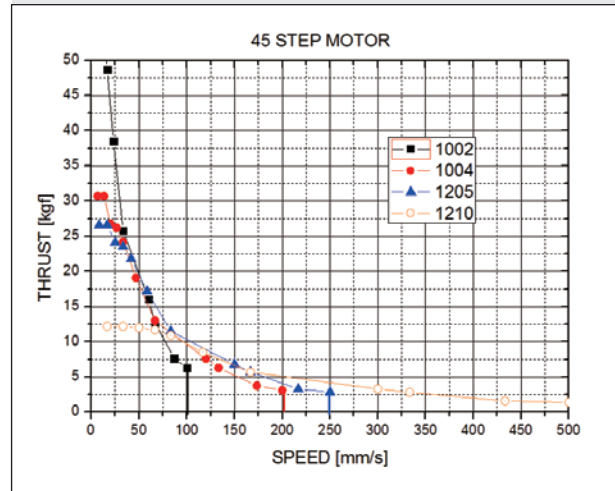
1. DC Step Motor

EMC 35 Series

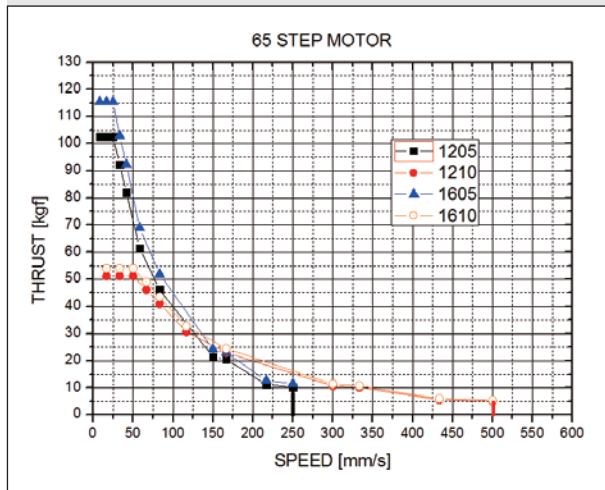


주) lead 8 별도 문의

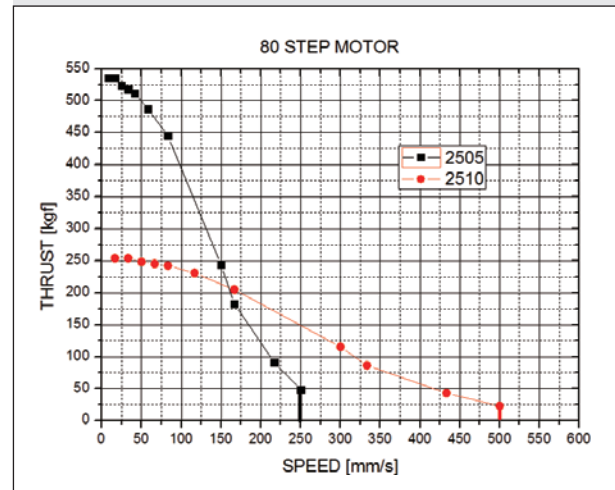
EMC 45 Series



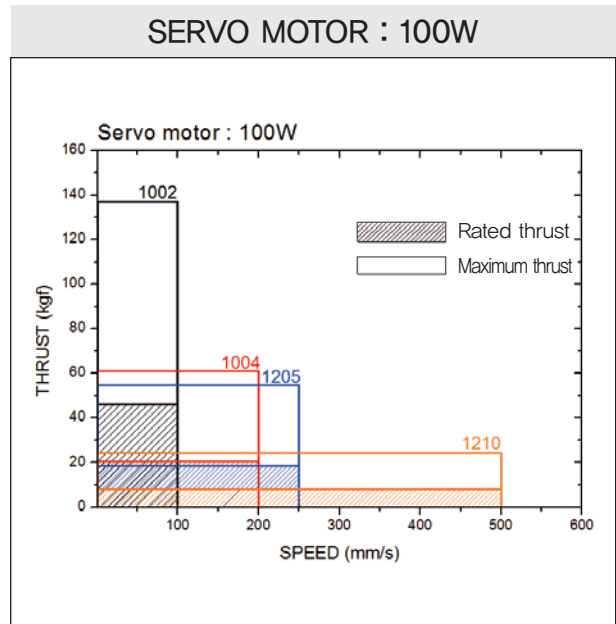
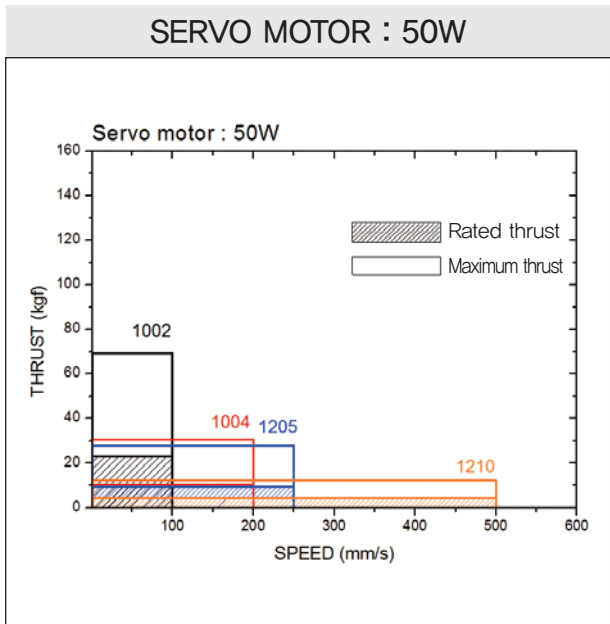
EMC 65 Series



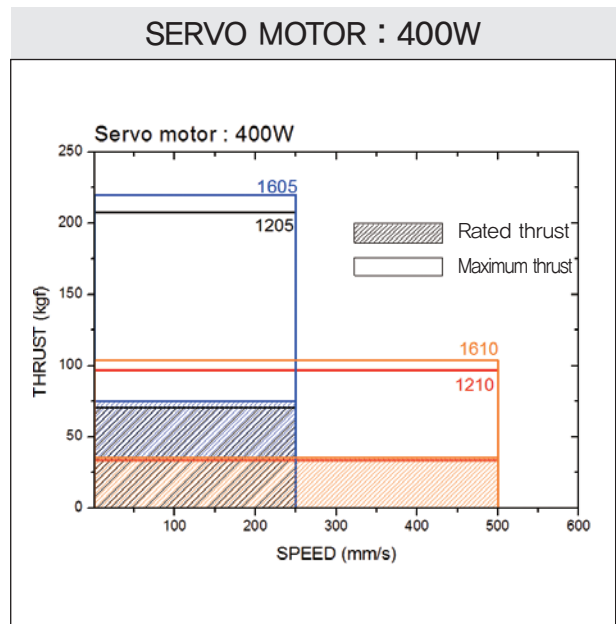
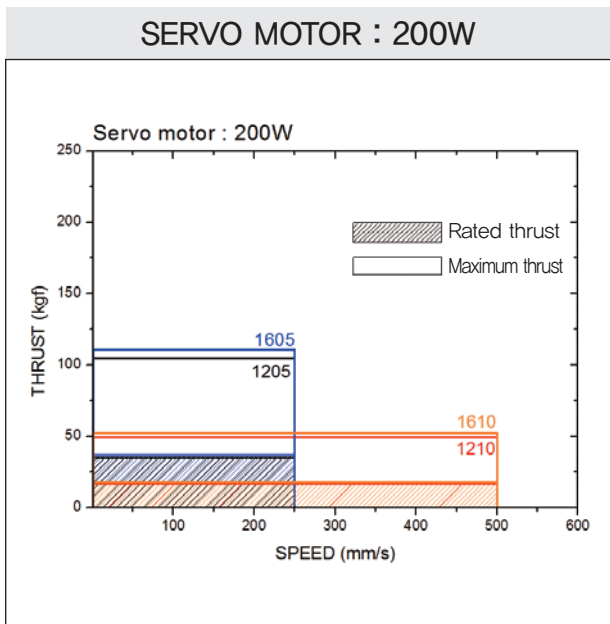
EMC 80 Series



2. AC SERVO Motor

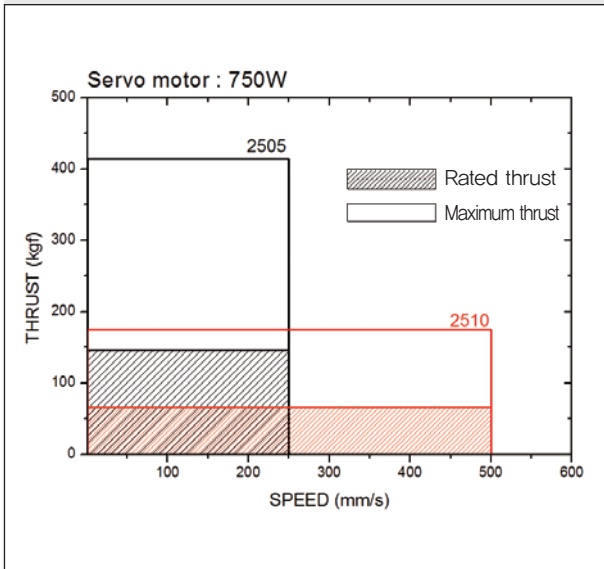


A. EMC 45 Series



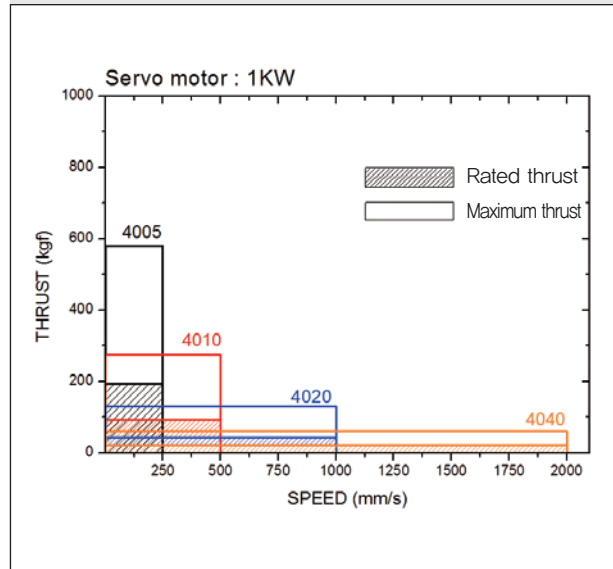
B. EMC 65 Series

SERVO MOTOR : 750W



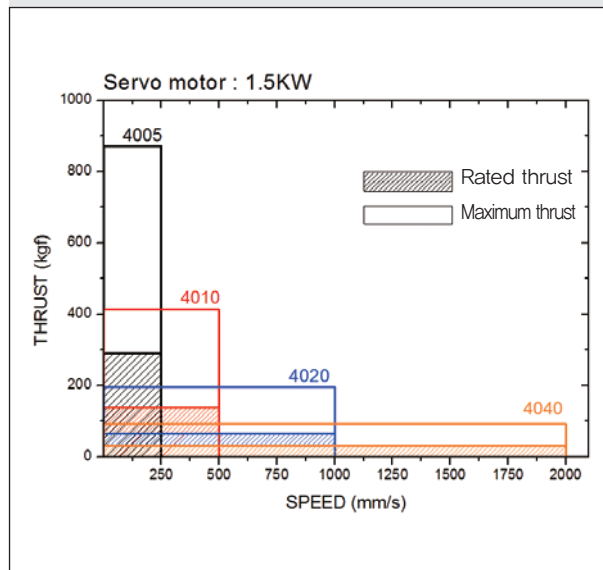
C. EMC 80 Series

SERVO MOTOR : 1KW



D. EMC 130 Series

SERVO MOTOR : 1.5KW



D. EMC 130 Series

 **TPC Mechatronics Corp.**

<http://www.TPCpage.co.kr> www.TPC3d.co.kr

고객만족센터 : 1588-5982

2016. 07월 인쇄

- | | | | |
|---|---|--|---|
| <ul style="list-style-type: none"> ■ 영업 본부 : 인천광역시 서구 갑문2로 39 ■ 단해창도클러스터 (TPC) : 인천광역시 서구 갑문2로 39 ■ 단해창도클러스터 (단해) : 인천광역시 서구 갑문2로 43 | <ul style="list-style-type: none"> TEL : 1588-5982 / FAX : (032)578-0786 TEL : 1588-5982 / FAX : (032)684-1880 TEL : (032)455-5555 / FAX : (032)675-5559 | <ul style="list-style-type: none"> ■ 인천공장 : 인천광역시 서구 백범로 603번길 24 ■ 기술연구소 : 인천광역시 서구 백범로 603번길 24 ■ 추풍령공장 : 충북 영동군 추풍령면 신안로 210-4 | <ul style="list-style-type: none"> TEL : 1588-5982 / FAX : (032)577-6894 TEL : 1588-5982 / FAX : (032)578-8985 TEL : (043)742-7788 / FAX : (043)742-9841 |
|---|---|--|---|

- | | | | | | | |
|--|--|--|--|--|--|--|
| <ul style="list-style-type: none"> ■ 영업 소 : | <ul style="list-style-type: none"> 서울 (032)580-0015 대전 (042)936-5881 부산 (051)312-8550 | <ul style="list-style-type: none"> 경인 (032)580-0021 구미 (054)474-8680 포항 (054)275-4035 | <ul style="list-style-type: none"> 경기 (031)401-9201 대구 (053)381-4086 | <ul style="list-style-type: none"> 수원 (031)206-8980 광주 (062)955-2995 | <ul style="list-style-type: none"> 평택 (031)657-0801 울산 (052)260-0714 | <ul style="list-style-type: none"> 천안 (041)568-0664 창원 (055)283-8550 |
|--|--|--|--|--|--|--|

※ 본 제품의 규격은 품질개선을 위하여 예고없이 변경될 수 있으므로 제품구입시 문의 바랍니다.

제조원 : TANHAY CORPORATION



ISO 9001 CERTIFIED NEP, CE UL MARK

