

SQ(M) Series

One -Touch Fittings



Features

- Compact & light weight compare to SQ Series
- SUS303 option is selectable for screw part(adaptable series : SQH, SQL, SQT) *Please refer to the detail page
- SQH type's hexagonal shape of the exterior and interior is efficient for the piping at the confined space
- SQL and SQT type's spinning structure body is efficient for the piping
- O-rings and Teflon treated at the screw part
- Copper-free option(nickel plated) is available.
- RoHS3 adaptable

How to order(Model)

SQ 06 - 01 S - X2 - M

1

2

3

4

5

1 Model

※Please refer to the detail page for the specifics

2 Applicable Tube O.D.

04 : Ø4
06 : Ø6
08 : Ø8
10 : Ø10
12 : Ø12

3 Screw

Size/Applicable Tube O.D.

M5 : M5x0.8
01 : R(c)1/8
02 : R(c)1/4
03 : R(c)3/8
04 : R(c)1/2

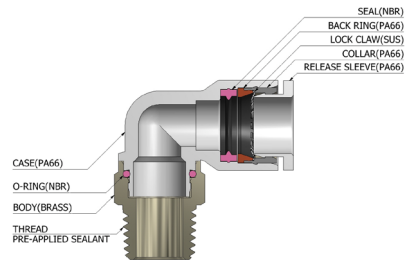
4 Sealant Treated Screw (Screw R)

S : Sealant

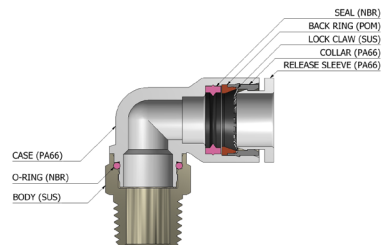
5 Coating

X2 : Copper-free(nickel plated)
(Nickel Coating)
BS : Screw Part SUS303
Blank : Standard

Structural Diagram(Standard -Nickel)



Structural Diagram (screw SUS 303)



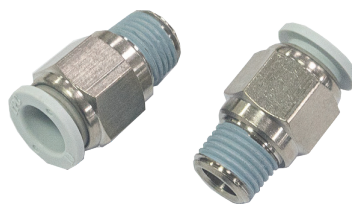
Standard Specifications

Fluid Type	AIR (No other type of gas or liquid)	
	Please use for the compressed air.	
Max Pressure	0 ~ 290PSI	0 ~ 20Kgf/cm ² (0 ~ 2000Kpa)
Negative Press.	-29.5in Hg	-750mmHg(-750Torr)
Temperature	-4°F ~ 176°F	-20 ~ 80°C

Caution

Please understand how to use it before using and refer to the safety precautions and common cautions.

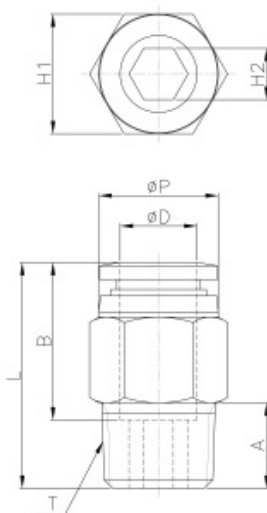
SQH(M)



MRTRIC-BSPT(R)

Unit : mm

Model	Tube ØD	T	ØP	L	A	B	H1(Hex)	H2(Hex)	WEIGHT(g)
SQH04-M5-X2-M	4	M5*0.8p	10	20.9	4	14.8	10	-	5.5
SQH04-01S-X2-M		R 1/8		22	8		10	3	7.8
SQH04-02S-X2-M		R 1/4		21	10		14	3	14.9
SQH06-M5-X2-M	6	M5*0.8p	12	20.9	4	16.4	12	-	7.5
SQH06-01S-X2-M		R 1/8		23.4	8		12	4	8.8
SQH06-02S-X2-M		R 1/4		21.9	10		14	5	12.6
SQH06-03S-X2-M		R 3/8		22.9	11		17	5	24.5
SQH08-01S-X2-M	8	R 1/8	14	28.4	8	18.4	14	5	13.3
SQH08-02S-X2-M		R 1/4		26.4	10		14	6	13.8
SQH08-03S-X2-M		R 3/8		23.9	11		17	6	22.1
SQH08-04S-X2-M		R 1/2		29.4	14		19	6	48.3
SQH10-01S-X2-M	10	R 1/8	16.1	29.9	8	19.7	17	5	19.2
SQH10-02S-X2-M		R 1/4		31.4	10		17	6	21.9
SQH10-03S-X2-M		R 3/8		27.5	11		17	8	21.5
SQH10-04S-X2-M		R 1/2		29.9	14		19	8	41.5
SQH12-02S-X2-M	12	R 1/4	19	33.7	10	21.9	19	6	26.6
SQH12-03S-X2-M		R 3/8		30.7	11		19	8	25.3
SQH12-04S-X2-M		R 1/2		30.2	14		19	8	33.9



*X2 type and standard type have a same size

Screw part SUS Type

Unit : mm

Model	Tube ØD	T	ØP	L	A	B	H1(Hex)	H2(Hex)	WEIGHT(g)
SQH04-M5-BS-M	4	M5*0.8p	10	20.9	4	14.8	10	-	7
SQH04-01S-BS-M		R 1/8		22	8		10	3	9
SQH04-02S-BS-M		R 1/4		21	10		14	3	16
SQH06-M5-BS-M	6	M5*0.8p	12	23.1	4	16.4	12	-	10
SQH06-01S-BS-M		R 1/8		23.4	8		12	4	10
SQH06-02S-BS-M		R 1/4		21.9	10		14	5	14
SQH08-01S-BS-M	8	R 1/8	14	28.4	8	18.4	14	5	15
SQH08-02S-BS-M		R 1/4		26.4	10		14	6	16
SQH10-02S-BS-M	10	R 1/4	16.1	31.4	10	19.7	17	6	24
SQH10-03S-BS-M		R 3/8		27.5	11		17	8	24
SQH10-04S-BS-M		R 1/2		29.9	14		19	8	45
SQH12-03S-BS-M	12	R 3/8	19	30.7	11	21.9	19	8	29
SQH12-04S-BS-M		R 1/2		30.2	14		19	8	38

*X2 type and standard type have a same size

SQE-00(M)

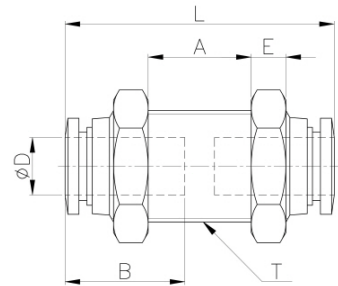
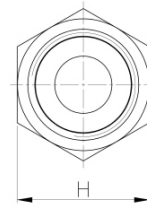


MRTRIC-BSPT(R)

Unit : mm

Model	Tube ØD	T	L	E	A	B	H1(Hex)	WEIGHT(g)
SQE04-00-X2-M	4	M12*1.0p	35.5	4	15.5	14.8	14	20
SQE06-00-X2-M	6	M14*1.0p	39.8	4	18.2	16.4	17	29
SQE08-00-X2-M	8	M16*1.0p	42.2	5	18.3	18.4	19	39
SQE10-00-X2-M	10	M20*1.0p	45.1	5	19.2	19.7	24	66
SQE12-00-X2-M	12	M22*1.0p	50.2	5	24.1	21.9	26	83

*X2 type and standard type have a same size



SQF(M)

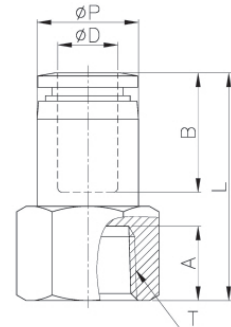
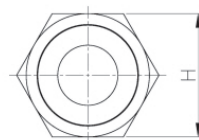


MRTRIC-BSPT(R)

Unit: mm

Model	Tube ØD	T	ØP	L	A	B	H1(Hex)	WEIGHT(g)
SQF04-01-X2-M	4	Rc 1/8	10	27.1	9	14.8	14	17
SQF04-02-X2-M		Rc 1/4		29.1	11		17	22
SQF06-01-X2-M	6	Rc 1/8	12	28.2	9	16.4	14	18
SQF06-02-X2-M		Rc 1/4		30.2	11		17	24
SQF06-03-X2-M		Rc 3/8		31.2	12		22	38
SQF08-01-X2-M	8	Rc 1/8	14	29.4	9	18.4	14	19
SQF08-02-X2-M		Rc 1/4		31.4	11		17	24
SQF08-03-X2-M		Rc 3/8		32.4	12		22	39
SQF08-04-X2-M		Rc 1/2		34.4	14		24	41
SQF10-01-X2-M	10	Rc 1/8	16.4	32.6	9	19.7	17	31
SQF10-02-X2-M		Rc 1/4		32.6	11		17	26
SQF10-03-X2-M		Rc 3/8		33.6	12		22	41
SQF10-04-X2-M		Rc 1/2		35.6	14		24	43
SQF12-02-X2-M	12	Rc 1/4	19	37.1	11	21.9	22	54
SQF12-03-X2-M		Rc 3/8		37.1	12		22	46
SQF12-04-X2-M		Rc 1/2		39.1	14		24	50

*X2 type and standard type have a same size



SQE(M)

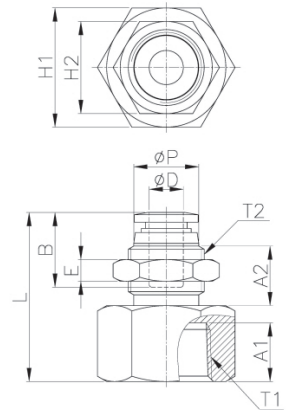


MRTRIC-BSPT(R)

Unit: mm

Model	Tube ØD	T1	ØP	T2	L	E	A1	A2	B	H1(Hex)	H2(Hex)	WEIGHT(g)
SQE04-01-X2-M	4	R 1/8	10	M12*1.0p	27.1	4	9	10.6	14.8	14	14	20
SQE06-01-X2-M	6	R 1/8	12	M14*1.0p	30.2	4	9	11	16.4	17	17	34
SQE06-02-X2-M		R 1/4			30.2		11			17	28	
SQE08-01-X2-M	8	R 1/8	14	M16*1.0p	31.4	5	9	12	18.4	19	19	45
SQE08-02-X2-M		R 1/4			31.4		11			19		40
SQE08-03-X2-M		R 3/8			32.4		12			22		46
SQE10-02-X2-M	10	R 1/4	16.1	M20*1.0p	33.6	5	11	12.7	19.7	24	24	71
SQE10-03-X2-M		R 3/8			33.6		12			24		66
SQE10-04-X2-M		R 1/2			35.6		14			24		58
SQE12-02-X2-M		R 1/4			38.3		11			24		85
SQE12-03-X2-M	12	R 3/8	19	M22*1.0p	38.3	5	12	17.1	21.9	24	26	76
SQE12-04-X2-M		R 1/2			40.3		14			24	70	

*X2 type and standard type have a same size



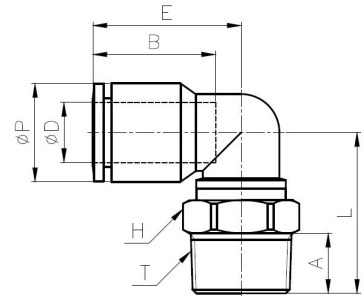
SQL(M)



MRTRIC-BSPT(R)

Unit : mm

Model	Tube ØD	T	ØP	L	E	A	B	H(Hex)	WEIGHT(g)
SQL04-M5-X2-M	4	M5*0.8p	9.3	16.2	15.5	4	13	9	3.5
SQL04-01S-X2-M		R 1/8		18.7		7		10	6.7
SQL04-02S-X2-M		R 1/4		21.7		10		14	12.6
SQL06-M5-X2-M	6	M5*0.8p	11.5	17.5	17.3	4	15	9	4
SQL06-01S-X2-M		R 1/8		20		7		10	7.2
SQL06-02S-X2-M		R 1/4		23		10		14	13.2
SQL06-03S-X2-M		R 3/8		23		10		17	19.6
SQL08-01S-X2-M	8	R 1/8	13.6	21.8	21.2	7	16.9	10	6.3
SQL08-02S-X2-M		R 1/4		24.8		10		14	13.1
SQL08-03S-X2-M		R 3/8		24.8		10		17	19.6
SQL08-04S-X2-M		R 1/2		27.8		13		21	34.6
SQL10-01S-X2-M	10	R 1/8	16.4	24.8	24.7	7	18.9	15	12.4
SQL10-02S-X2-M		R 1/4		26.8		10		15	14
SQL10-03S-X2-M		R 3/8		26.8		10		17	19.5
SQL10-04S-X2-M		R 1/2		29.8		13		21	33.4
SQL12-02S-X2-M	12	R 1/4	19.5	28.5	28.3	10	21.4	15	16.1
SQL12-03S-X2-M		R 3/8		28.5		10		17	21.6
SQL12-04S-X2-M		R 1/2		31.5		13		21	35.5



*X2 type and standard type have a same size

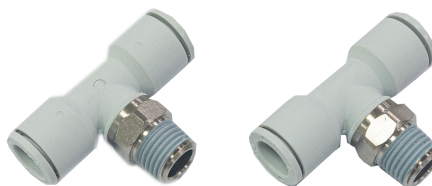
Screw part SUS Type

Unit : mm

Model	Tube ØD	T	ØP	L	E	A	B	H(Hex)	WEIGHT(g)
SQL04-M5-BS-M	4	M5*0.8p	9.3	16.2	15.5	4	13	9	3.5
SQL04-01S-BS-M		R 1/8		18.7		7		10	6.7
SQL04-02S-BS-M		R 1/4		21.7		10		14	12.6
SQL06-M5-BS-M	6	M5*0.8p	11.5	17.5	17.3	4	15	9	4
SQL06-01S-BS-M		R 1/8		20		7		10	7.2
SQL06-02S-BS-M		R 1/4		23		10		14	13.2
SQL08-01S-BS-M	8	R 1/8	13.6	21.8	21.2	7	16.9	10	6.3
SQL08-02S-BS-M		R 1/4		24.8		10		14	13.1
SQL10-02S-BS-M		R 1/4		26.8		10		15	14
SQL10-03S-BS-M	10	R 3/8	16.4	26.8	24.7	10	18.9	17	19.5
SQL10-04S-BS-M		R 1/2		29.8		13		21	33.4
SQL12-03S-BS-M	12	R 3/8	19.5	28.5	28.3	10	21.4	17	21.6
SQL12-04S-BS-M		R 1/2		31.5		13		21	35.5

*X2 type and standard type have a same size

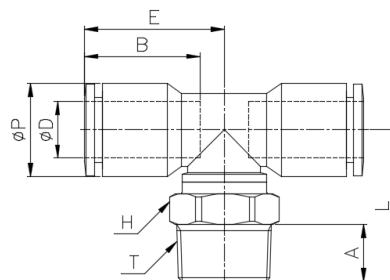
SQT(M)



MRTRIC-BSPT(R)

Unit : mm

Model	Tube ØD	T	ØP	L	E	A	B	H(Hex)	WEIGHT(g)
SQT04-M5-X2-M	4	M5*0.8p	9.3	16.2	15.5	4	13	9	4.2
SQT04-01S-X2-M		R1/8		18.7		7		10	7.4
SQT04-02S-X2-M		R1/4		21.7		10		14	13.3
SQT06-M5-X2-M	6	M5*0.8p	11.5	17.5	17.3	4	15	9	5.1
SQT06-01S-X2-M		R1/8		20		7		10	8.4
SQT06-02S-X2-M		R1/4		23		10		14	14.4
SQT06-03S-X2-M		R3/8		23		10		17	20.8
SQT08-01S-X2-M	8	R1/8	13.6	21.8	21.2	7	16.9	10	7.9
SQT08-02S-X2-M		R1/4		24.8		10		14	14.7
SQT08-03S-X2-M		R3/8		24.8		10		17	21.2
SQT08-04S-X2-M		R1/2		27.8		13		21	36.1
SQT10-01S-X2-M	10	R1/8	16.4	24.8	24.7	7	18.9	15	14.8
SQT10-02S-X2-M		R1/4		26.8		10		15	16.4
SQT10-03S-X2-M		R3/8		26.8		10		17	22
SQT10-04S-X2-M		R1/2		29.8		13		21	35.9
SQT12-02S-X2-M	12	R1/4	19.5	28.5	28.3	10	21.4	15	20.2
SQT12-03S-X2-M		R3/8		28.5		10		17	25.8
SQT12-04S-X2-M		R1/2		31.5		13		21	39.7



*X2 type and Standard type have a same size

Screw part SUS Type

Unit : mm

Model	Tube ØD	T	ØP	L	E	A	B	H(Hex)	WEIGHT(g)
SQT04-M5-BS-M	4	M5*0.8p	9.3	16.2	15.5	4	13	9	4.2
SQT04-01S-BS-M		R1/8		18.7		7		10	7.4
SQT04-02S-BS-M		R1/4		21.7		10		14	13.3
SQT06-M5-BS-M	6	M5*0.8p	11.5	17.5	17.3	4	15	9	5.1
SQT06-01S-BS-M		R1/8		20		7		10	8.4
SQT06-02S-BS-M		R1/4		23		10		14	14.4
SQT08-01S-BS-M	8	R1/8	13.6	21.8	21.2	7	16.9	10	7.9
SQT08-02S-BS-M		R1/4		24.8		10		14	14.7
SQT10-02S-BS-M		R1/4		26.8		10		15	16.4
SQT10-03S-BS-M	10	R3/8	16.4	26.8	24.7	10	18.9	17	22
SQT10-04S-BS-M		R1/2		29.8		13		21	35.9
SQT12-03S-BS-M	12	R3/8	19.5	28.5	28.3	10	21.4	17	25.8
SQT12-04S-BS-M		R1/2		31.5		13		21	39.7

*X2 type and standard type have a same size

SQH-00(M)

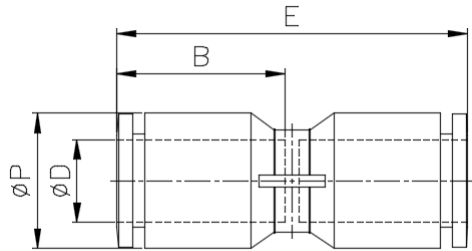


MRTRIC-BSPT(R)

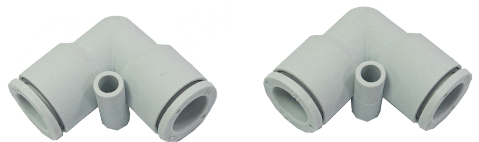
Unit : mm

Model	Tube ØD	ØP	E	B	WEIGHT(g)
SQH04-00-X2-M	4	9.3	27	13	1.5
SQH06-00-X2-M	6	11.5	31.2	15	2.4
SQH08-00-X2-M	8	13.6	35.2	16.9	3.4
SQH10-00-X2-M	10	16.4	39.6	18.9	5.4
SQH12-00-X2-M	12	19.5	44.6	21.4	8.6

*X2 type and standard type have a same size



SQL-00(M)

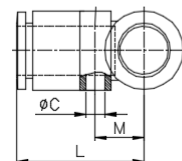
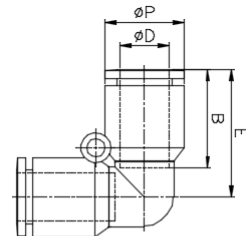


MRTRIC-BSPT(R)

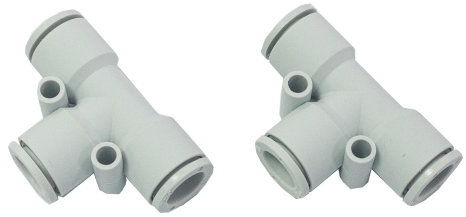
Unit : mm

Model	Size ØD	ØP	L	E	C	B	M	WEIGHT(g)
SQL04-00-X2-M	4	9.3	15.5	15.5	3.2	13	6.3	1.7
SQL06-00-X2-M	6	11.5	18.9	18.9	3.2	15	7.4	2.8
SQL08-00-X2-M	8	13.6	21.9	21.9	3.2	16.9	8.4	4.2
SQL10-00-X2-M	10	16.4	25.1	25.1	4.2	18.9	10.3	6.5
SQL12-00-X2-M	12	19.5	28.8	28.8	4.2	21.4	11.9	10.4

*X2 type and standard type have a same size



SQT-00(M)

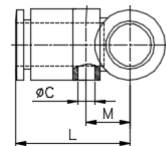
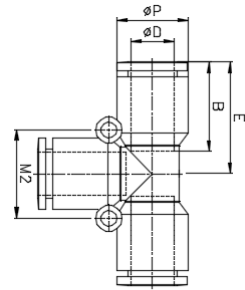


MRTRIC-BSPT(R)

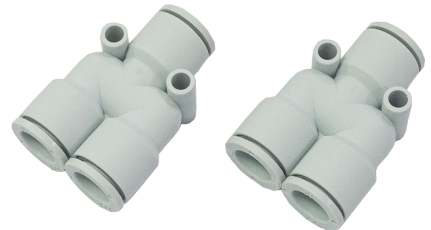
Unit : mm

Model	Tube ØD	ØP	L	E	C	B	M1	M2	WEIGHT(g)
SQT04-00-X2-M	4	9.3	15.5	15.5	3.2	13	6.3	12.6	2.6
SQT06-00-X2-M	6	11.5	18.9	18.9	3.2	15	7.4	14.8	4.2
SQT08-00-X2-M	8	13.6	21.9	21.9	3.2	16.9	8.4	16.8	5.8
SQT10-00-X2-M	10	16.4	25.1	25.1	4.2	18.9	10.3	20.6	9.5
SQT12-00-X2-M	12	19.5	28.8	28.8	4.2	21.4	11.9	23.8	14.9

*X2 type and standard type have a same size



SQU-00(M)

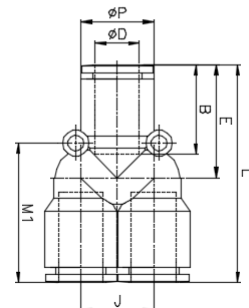
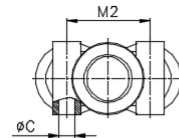


MRTRIC-BSPT(R)

Unit : mm

Model	Tube ØD	ØP	L	E	J	ØC	B	M1	M2	WEIGHT(g)
SQU04-00-X2-M	4	9.3	31	16.1	9.3	3.2	13	19.4	11.7	2.6
SQU06-00-X2-M	6	11.5	36.2	18.9	11.5	3.2	15	22.8	13.6	4.3
SQU08-00-X2-M	8	13.6	41	21.3	13.6	3.2	16.9	26.3	15.7	6.2
SQU10-00-X2-M	10	16.4	46.6	23.9	16.4	4.2	18.9	31	20.1	10.3
SQU12-00-X2-M	12	19.5	55	28.5	19.5	4.2	21.4	36	22.4	15.8

*X2 type and standard type have a same size



SQH-R(M)



MRTRIC-BSPT(R)

Unit : mm

Model	Tube ØD	ØD2	ØP1	ØP2	E	B1	B2	WEIGHT(g)
SQH04-06-X2-M	6	4	11.5	9.3	29.1	15	13	1.8
SQH06-08-X2-M	8	6	13.6	11.5	32.9	16.9	15	2.7
SQH08-10-X2-M	10	8	16.4	13.6	36.9	18.9	16.9	4.1
SQH10-12-X2-M	12	10	19.5	16.4	41.4	21.4	18.9	6.5

*X2 type and standard type have a same size

